

PR Antsla esindusväljak

Content

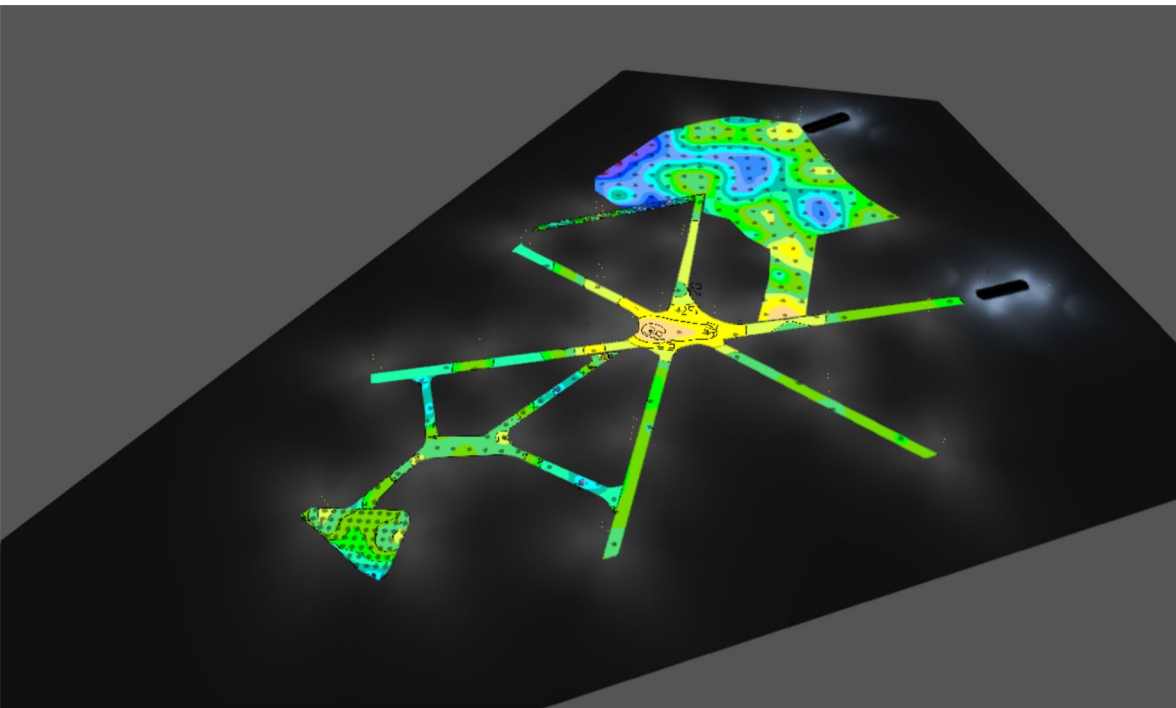
Cover page	1
Content	2
Description	3
Luminaire list	4

Product data sheets

Keha3 - K3 WNB5 ME90 830 350mA (1x 14 x XP-G3)	5
LUG LIGHT FACTORY - URBINO LED ED 6500lm/740 O6P szary (1x LED 4000K)	6
LUG LIGHT FACTORY - URBINO LED ED 10200lm/740 O6P szary (1x LED 4000K)	7

Site 1

Calculation objects / Light scene 1	8
Rist - väike / Light scene 1 / Perpendicular illuminance	11
Rist - suur / Light scene 1 / Perpendicular illuminance	12
Rada-põhi / Light scene 1 / Perpendicular illuminance	13
välikohvik / Light scene 1 / Perpendicular illuminance	14
Plats / Light scene 1 / Perpendicular illuminance	15
Ülekäigurada 1 / Light scene 1 / Vertical illuminance	16
Ülekäigurada 1 / Light scene 1 / Vertical illuminance	17
Ülekäigurada 1 kesktelg / Light scene 1 / Vertical illuminance	18
Ülekäigurada 2 / Light scene 1 / Vertical illuminance	19
Ülekäigurada 2 / Light scene 1 / Vertical illuminance	20
Ülekäigurada 2 kesktelg / Light scene 1 / Vertical illuminance	21



Description

Antsla esindusväljaku valgusarvutus Keha3 OÜ välivalgustitega "CITY LAMP (LO-CL-03)" 5m mastidel.

Tellija

Diederik Kales

KEHA3 OÜ

Telliskivi 60a/5

T +372 58150095

diederik@keha3.ee

Läbiviija

Sander Vislapuu

Draftes OÜ

Kentmanni 9-3

T +372 56627237

sander@draftes.com

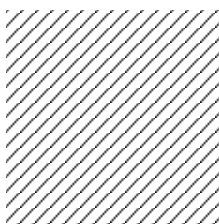
Luminaire list

Φ_{total} 173710 lm	P_{total} 1670.0 W	Luminous efficacy 104.0 lm/W
------------------------------------	--------------------------------	---------------------------------

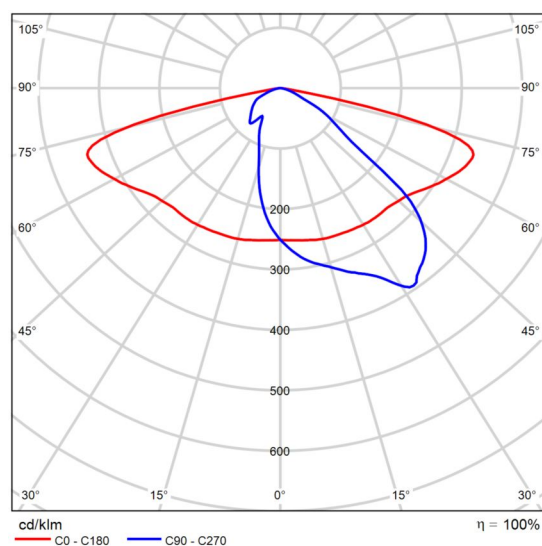
pcs.	Manufacturer	Article No.	Article name	P	Φ	Luminous efficacy
90	Keha3	LC-O-W5-C0AG-L01D02183	K3 WNB5 ME90 830 350mA	15.6 W	1559 lm	99.7 lm/W
2	LUG LIGHT FACTORY	130222.5L041.051	URBINO LED ED 6500lm/740 O6P szary	53.0 W	6500 lm	122.6 lm/W
2	LUG LIGHT FACTORY	130222.5L071.051	URBINO LED ED 10200lm/740 O6P szary	80.0 W	10200 lm	127.5 lm/W

Product data sheet

Keha3 - K3 WNB5 ME90 830 350mA



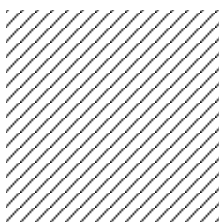
Article No.	LC-O-W5-C0AG-L01D02183
P	15.6 W
Φ_{Lamp}	1559 lm
$\Phi_{\text{Luminaire}}$	1559 lm
η	100.00 %
Luminous efficacy	99.7 lm/W
CCT	3127 K
CRI	84



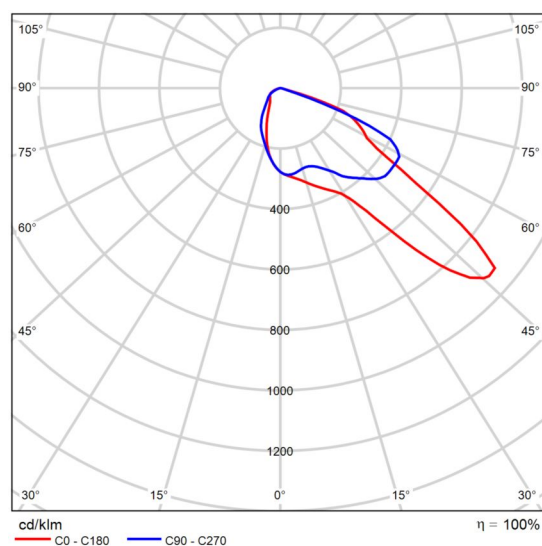
Polar LDC

Product data sheet

LUG LIGHT FACTORY - URBINO LED ED 6500lm/740 O6P szary



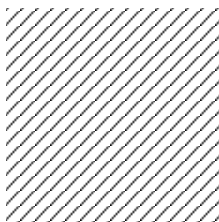
Article No.	130222.5L041.051
P	53.0 W
Φ_{Lamp}	6500 lm
$\Phi_{\text{Luminaire}}$	6500 lm
η	100.00 %
Luminous efficacy	122.6 lm/W
CCT	4000 K
CRI	70



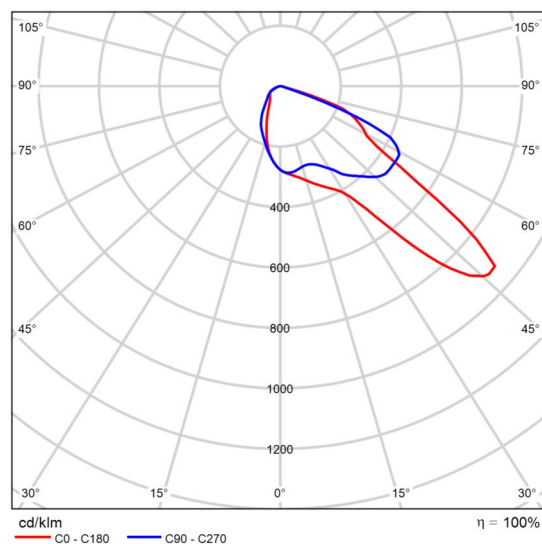
Polar LDC

Product data sheet

LUG LIGHT FACTORY - URBINO LED ED 10200lm/740 O6P szary



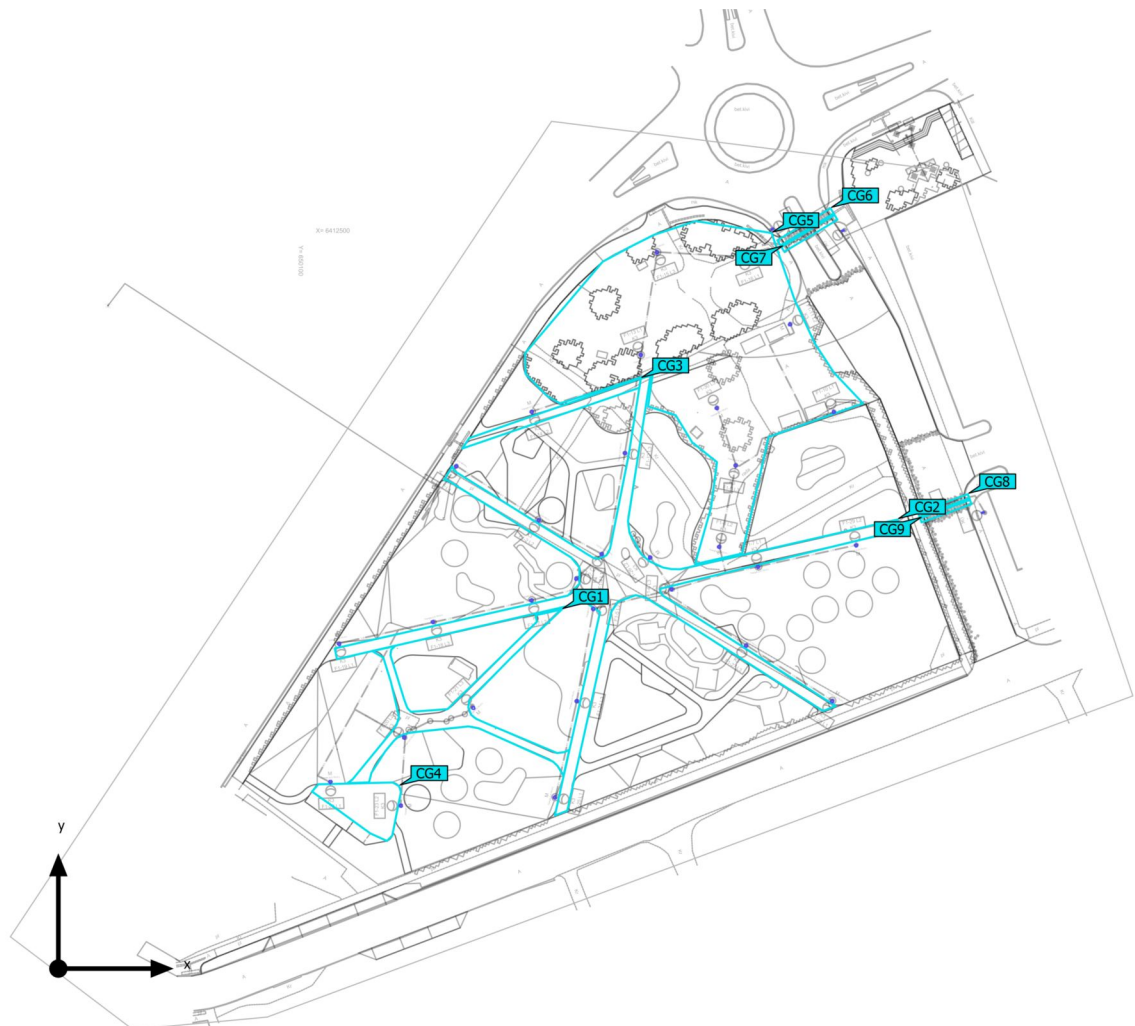
Article No.	130222.5L071.051
P	80.0 W
Φ_{Lamp}	10200 lm
$\Phi_{\text{Luminaire}}$	10200 lm
η	100.00 %
Luminous efficacy	127.5 lm/W
CCT	4000 K
CRI	70



Polar LDC

Site 1 (Light scene 1)

Calculation objects



Site 1 (Light scene 1)

Calculation objects

Calculation surfaces

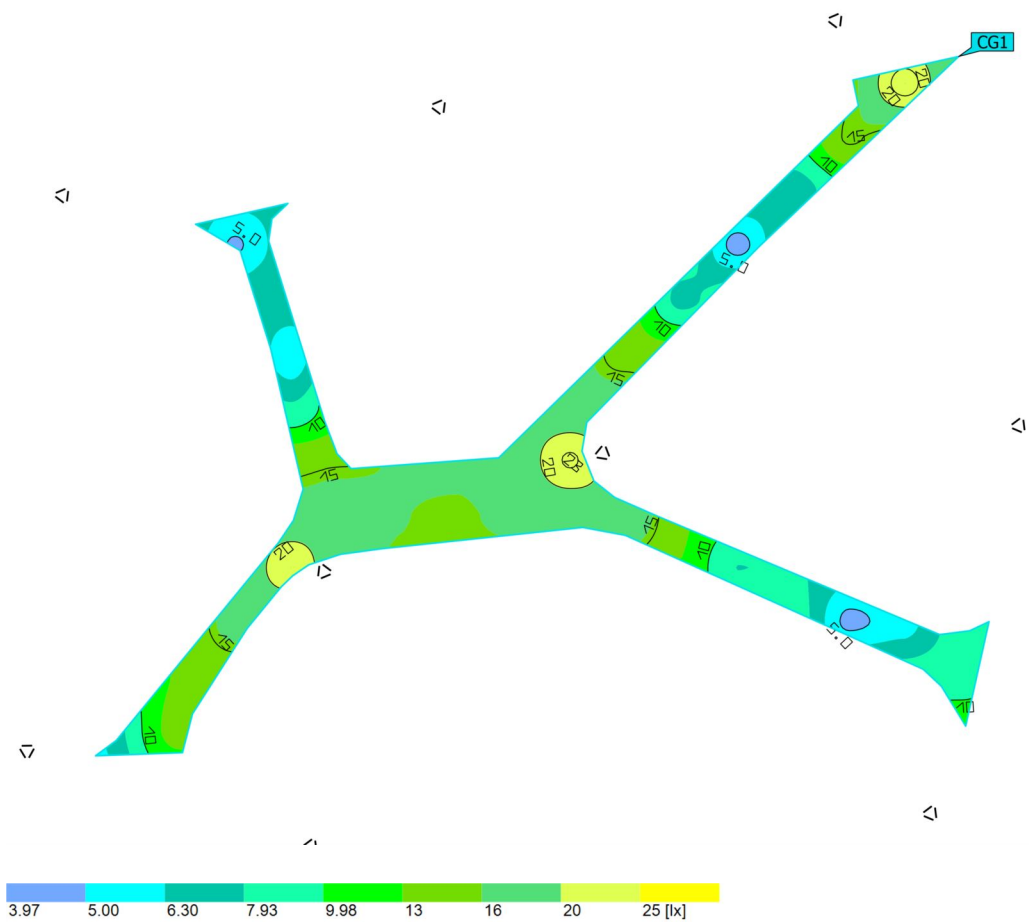
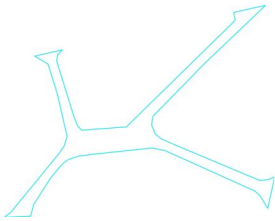
Properties	\bar{E}	E_{min}	E_{max}	g_1	g_2	Index
Rist - väike Perpendicular illuminance Height: 0.000 m	13.1 lx	4.58 lx	23.7 lx	0.35	0.19	CG1
Rist - suur Perpendicular illuminance Height: 0.000 m	19.0 lx	8.33 lx	37.6 lx	0.44	0.22	CG2
Rada -põhi Perpendicular illuminance Height: 0.000 m	9.59 lx	2.58 lx	21.2 lx	0.27	0.12	CG3
välikohvik Perpendicular illuminance Height: 0.000 m	14.2 lx	4.95 lx	22.1 lx	0.35	0.22	CG4
Plats Perpendicular illuminance Height: 0.000 m	10.8 lx	1.70 lx	37.9 lx	0.16	0.045	CG5
Ülekäigurada 1 Vertical illuminance Rotation: 120.0°, Height: 1.000 m	33.0 lx	3.68 lx	119 lx	0.11	0.031	CG6
Ülekäigurada 1 Vertical illuminance Rotation: 300.0°, Height: 1.000 m	33.2 lx	8.40 lx	118 lx	0.25	0.071	CG6
Ülekäigurada 1 kesktelg Vertical illuminance Rotation: 300.0°, Height: 1.000 m	38.9 lx	8.67 lx	119 lx	0.22	0.073	CG7
Ülekäigurada 2 Vertical illuminance Rotation: 110.0°, Height: 1.000 m	37.1 lx	6.94 lx	134 lx	0.19	0.052	CG8
Ülekäigurada 2 Vertical illuminance Rotation: 290.0°, Height: 1.000 m	37.0 lx	7.41 lx	157 lx	0.20	0.047	CG8
Ülekäigurada 2 kesktelg Vertical illuminance Rotation: 110.0°, Height: 1.000 m	38.7 lx	9.63 lx	83.6 lx	0.25	0.12	CG9

Site 1 (Light scene 1)

Calculation objects

Utilisation profile: DIALux presetting, Standard (outdoor transportation area)

Site 1 (Light scene 1)

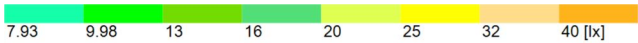
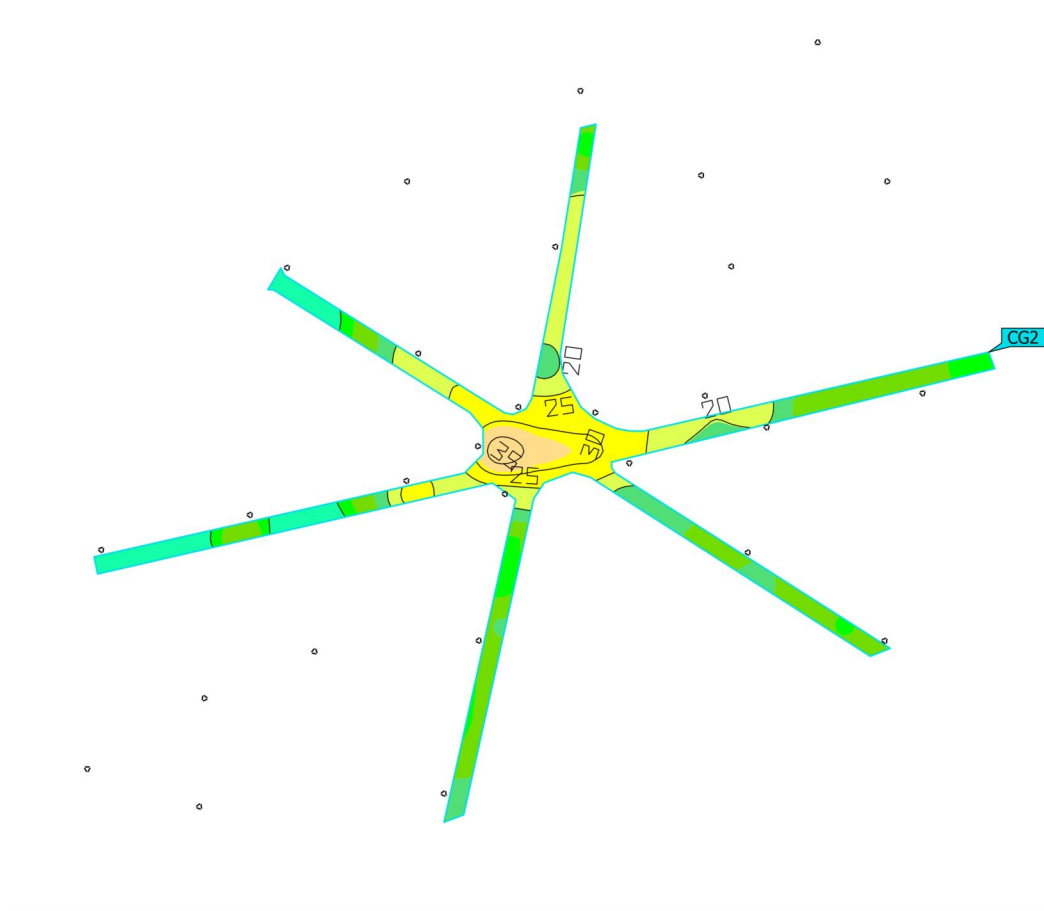
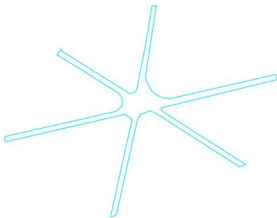
Rist - väike

Properties	\bar{E}	E_{min}	E_{max}	g_1	g_2	Index
Rist - väike	13.1 lx	4.58 lx	23.7 lx	0.35	0.19	CG1
Perpendicular illuminance						
Height: 0.000 m						

Utilisation profile: DIALux presetting, Standard (outdoor transportation area)

Site 1 (Light scene 1)

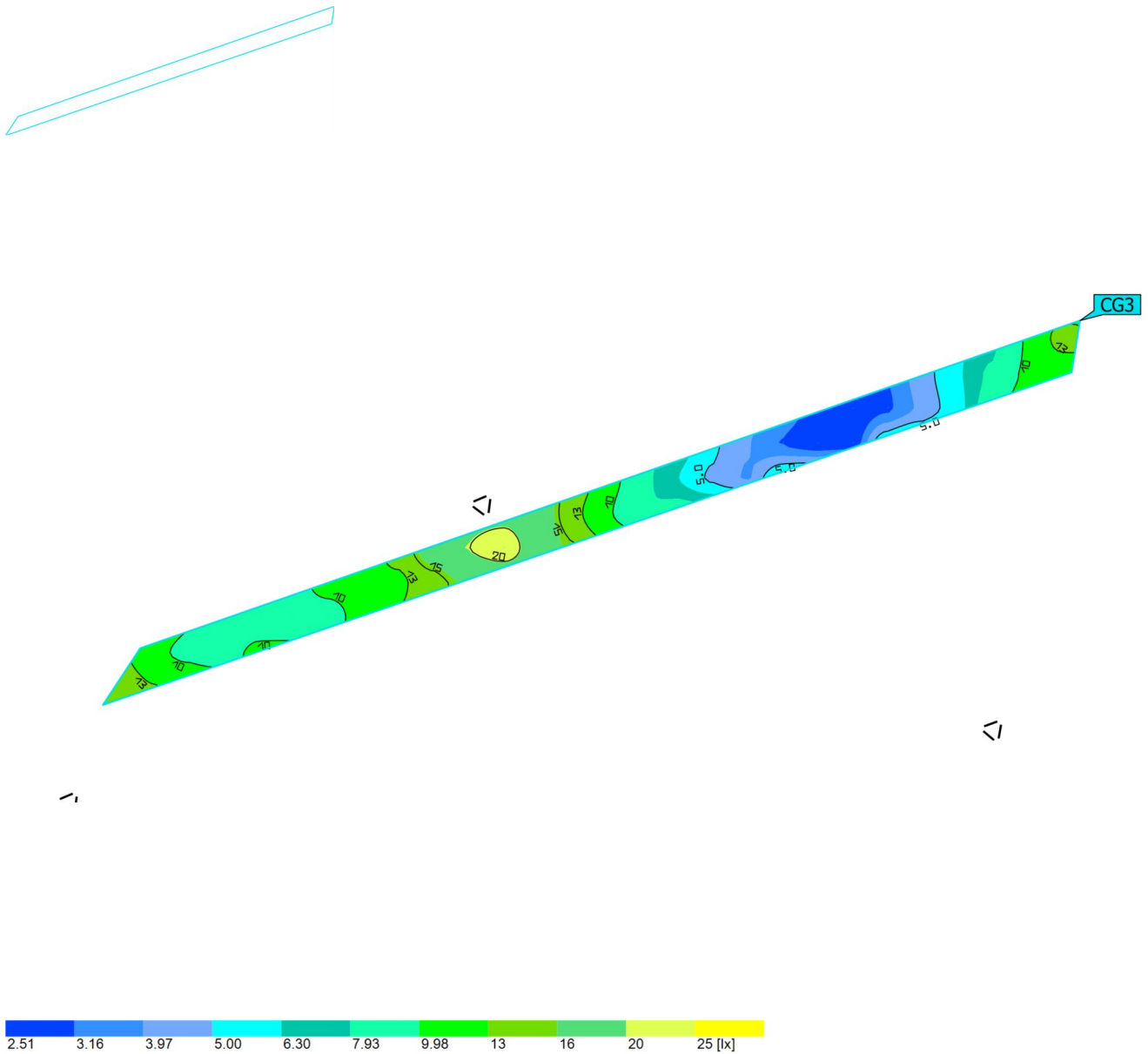
Rist - suur



Properties	\bar{E}	E_{min}	E_{max}	g_1	g_2	Index
Rist - suur	19.0 lx	8.33 lx	37.6 lx	0.44	0.22	CG2
Perpendicular illuminance						
Height: 0.000 m						

Utilisation profile: DIALux presetting, Standard (outdoor transportation area)

Site 1 (Light scene 1)

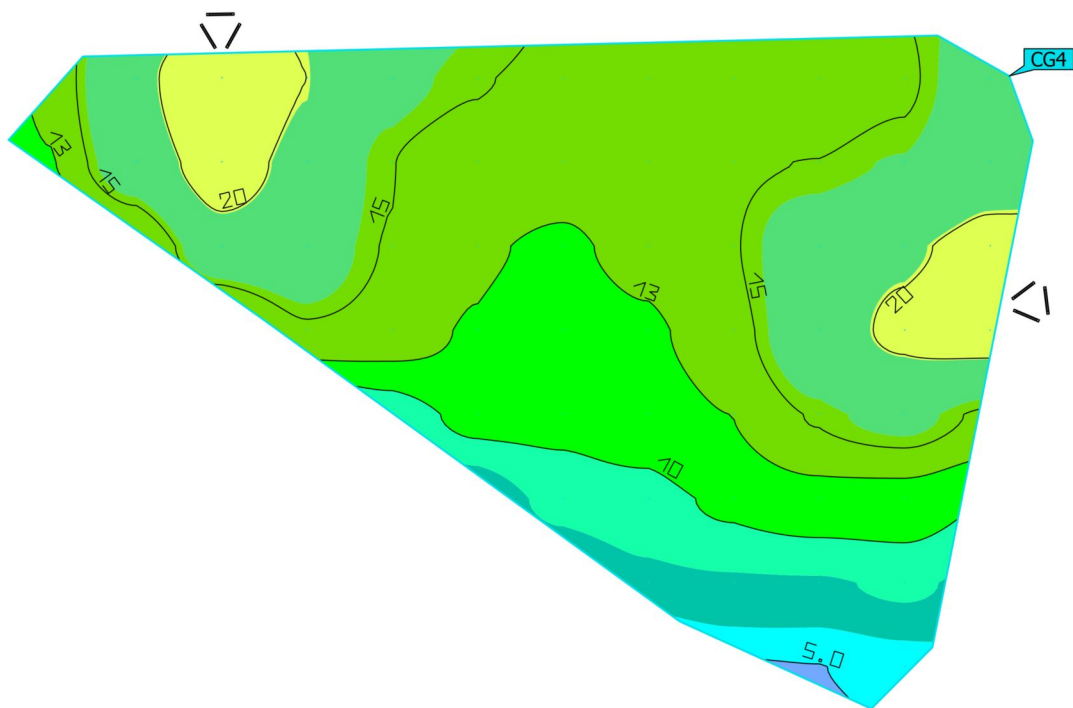
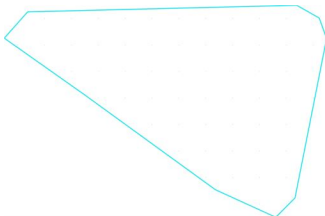
Rada -põhi

Properties	\bar{E}	E_{\min}	E_{\max}	g_1	g_2	Index
Rada -põhi	9.59 lx	2.58 lx	21.2 lx	0.27	0.12	CG3
Perpendicular illuminance						
Height: 0.000 m						

Utilisation profile: DIALux presetting, Standard (outdoor transportation area)

Site 1 (Light scene 1)

välikohvik

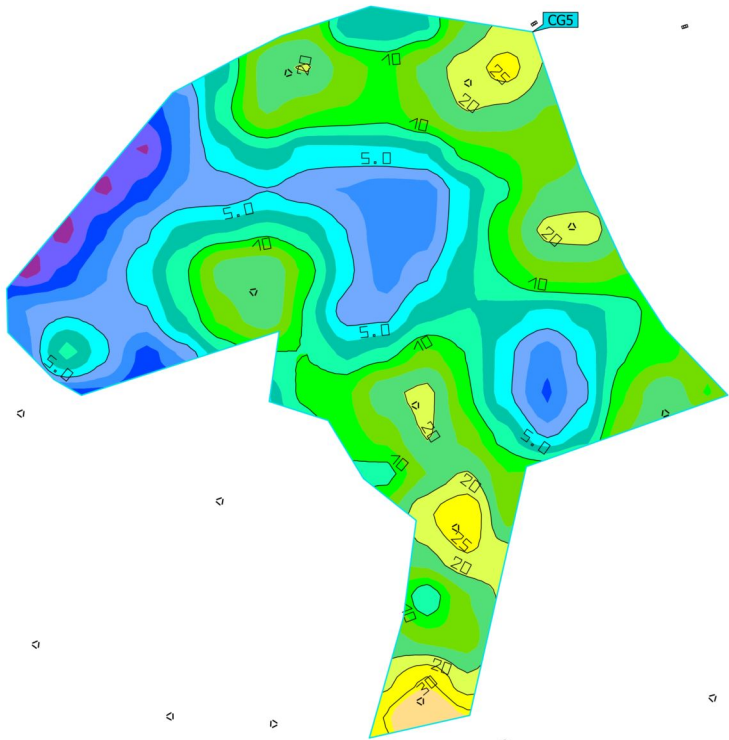
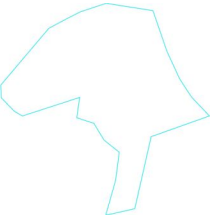


Properties	\bar{E}	E_{min}	E_{max}	g_1	g_2	Index
välikohvik	14.2 lx	4.95 lx	22.1 lx	0.35	0.22	CG4
Perpendicular illuminance						
Height: 0.000 m						

Utilisation profile: DIALux presetting, Standard (outdoor transportation area)

Site 1 (Light scene 1)

Plats

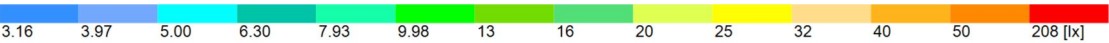
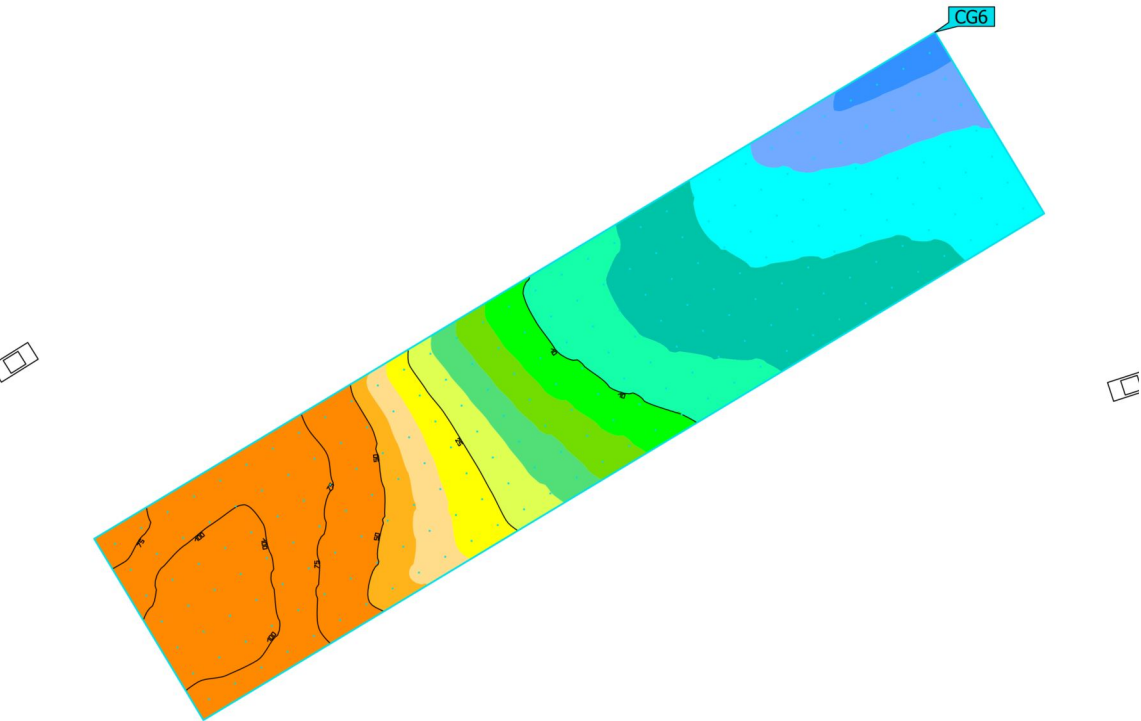
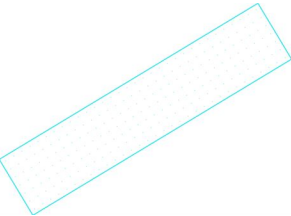


Properties	\bar{E}	E_{min}	E_{max}	g_1	g_2	Index
Plats	10.8 lx	1.70 lx	37.9 lx	0.16	0.045	CG5
Perpendicular illuminance						
Height: 0.000 m						

Utilisation profile: DIALux presetting, Standard (outdoor transportation area)

Site 1 (Light scene 1)

Ülekäigurada 1

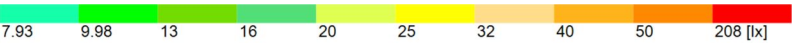
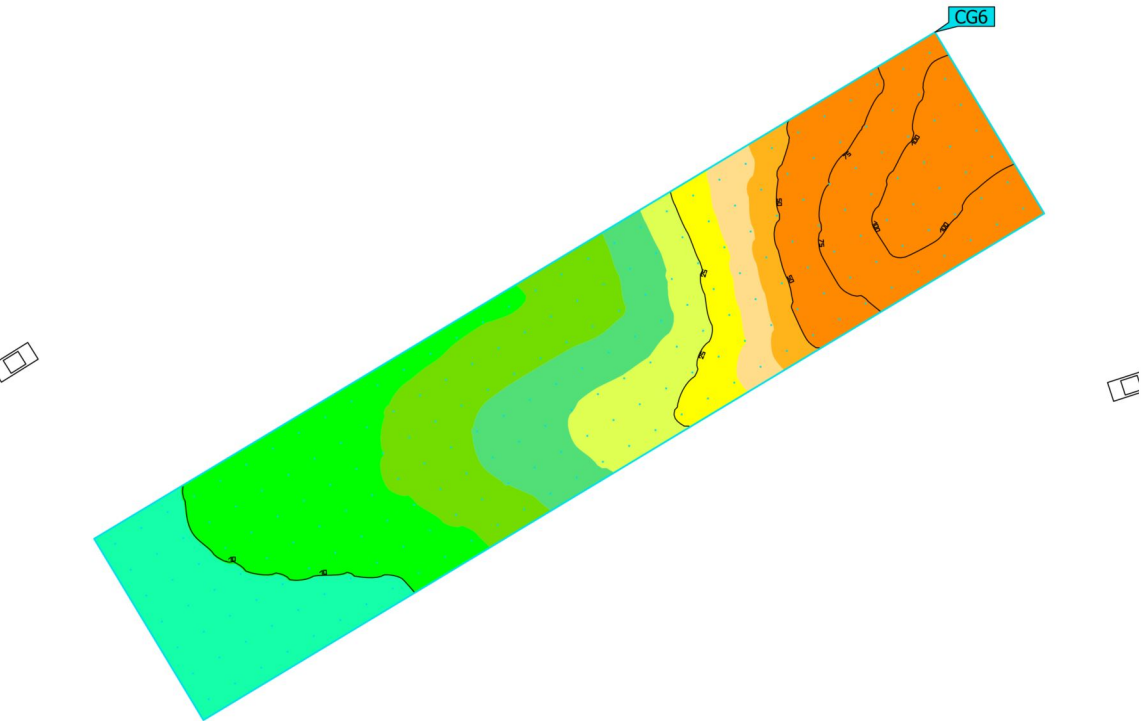
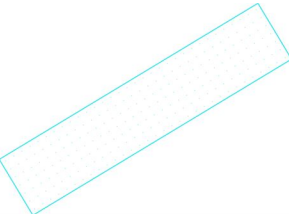


Properties	\bar{E}	E_{min}	E_{max}	g_1	g_2	Index
Ülekäigurada 1	33.0 lx	3.68 lx	119 lx	0.11	0.031	CG6
Vertical illuminance						
Rotation: 120.0°, Height: 1.000 m						

Utilisation profile: DIALux presetting, Standard (outdoor transportation area)

Site 1 (Light scene 1)

Ülekäigurada 1

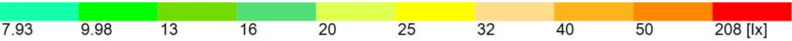
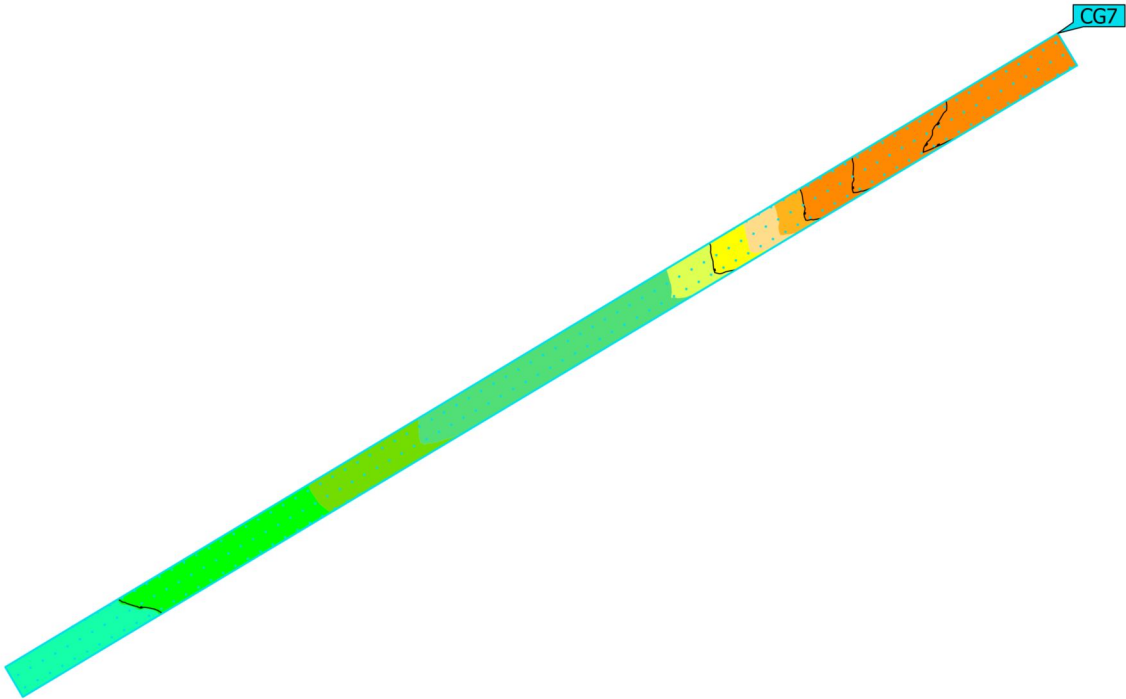
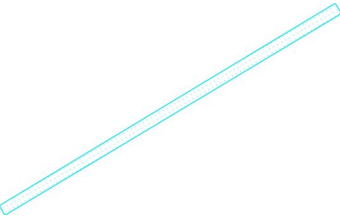


Properties	\bar{E}	E_{min}	E_{max}	g_1	g_2	Index
Ülekäigurada 1	33.2 lx	8.40 lx	118 lx	0.25	0.071	CG6
Vertical illuminance						
Rotation: 300.0°, Height: 1.000 m						

Utilisation profile: DIALux presetting, Standard (outdoor transportation area)

Site 1 (Light scene 1)

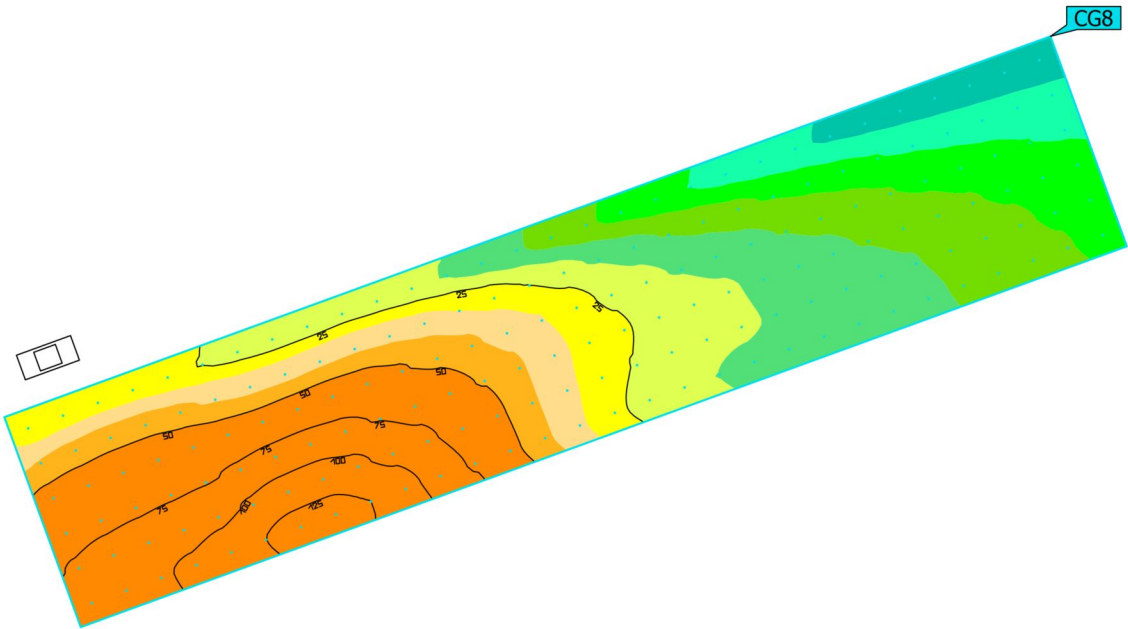
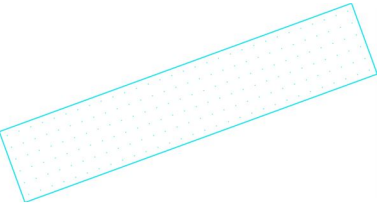
Ülekäigurada 1 kesktelg



Properties	\bar{E}	E_{min}	E_{max}	g_1	g_2	Index
Ülekäigurada 1 kesktelg	38.9 lx	8.67 lx	119 lx	0.22	0.073	CG7
Vertical illuminance						
Rotation: 300.0°, Height: 1.000 m						

Utilisation profile: DIALux presetting, Standard (outdoor transportation area)

Site 1 (Light scene 1)
Ülekäigurada 2

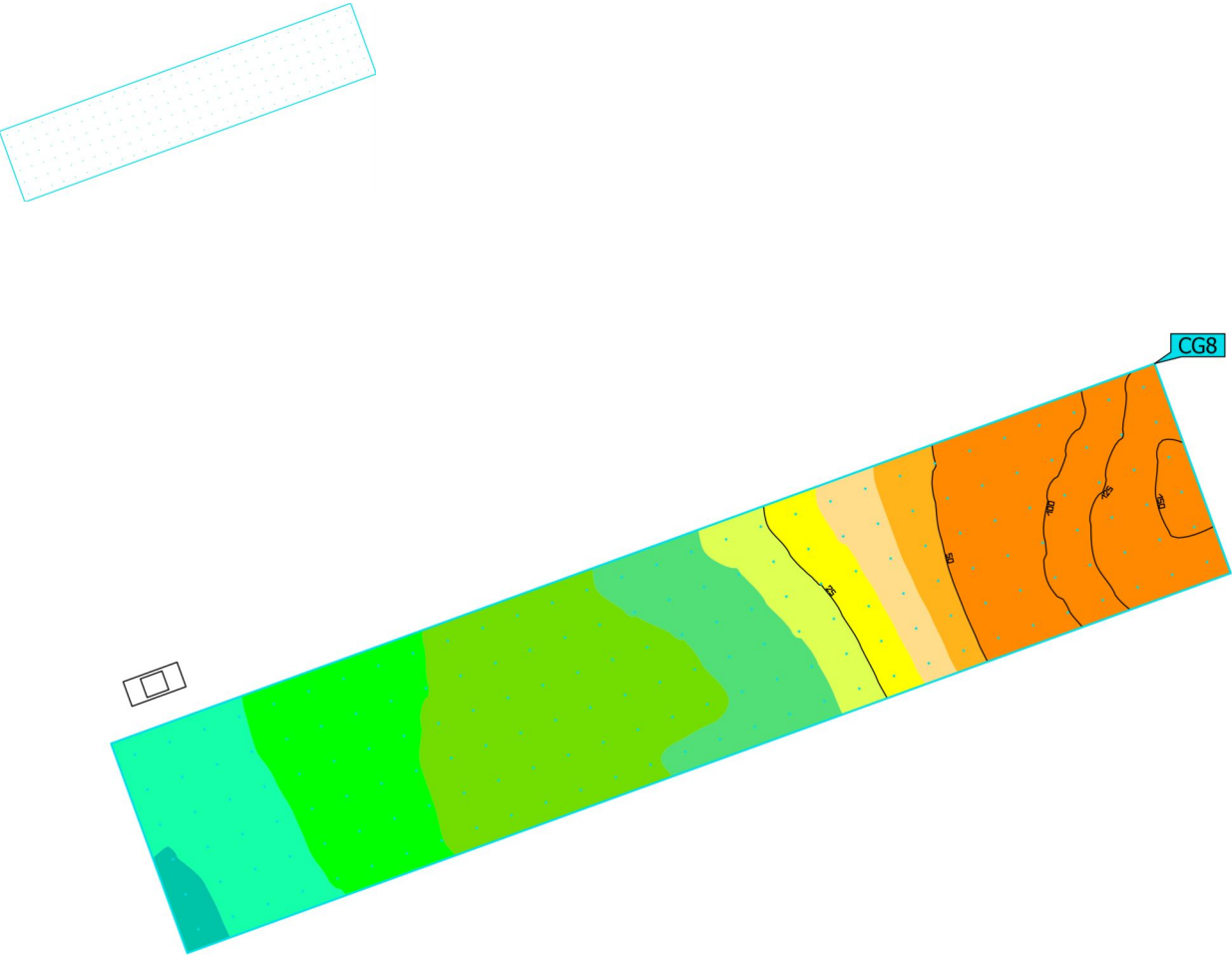


Properties	\bar{E}	E_{min}	E_{max}	g_1	g_2	Index
Ülekäigurada 2 Vertical illuminance Rotation: 110.0°, Height: 1.000 m	37.1 lx	6.94 lx	134 lx	0.19	0.052	CG8

Utilisation profile: DIALux presetting, Standard (outdoor transportation area)

Site 1 (Light scene 1)

Ülekäigurada 2

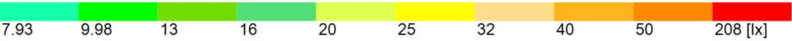
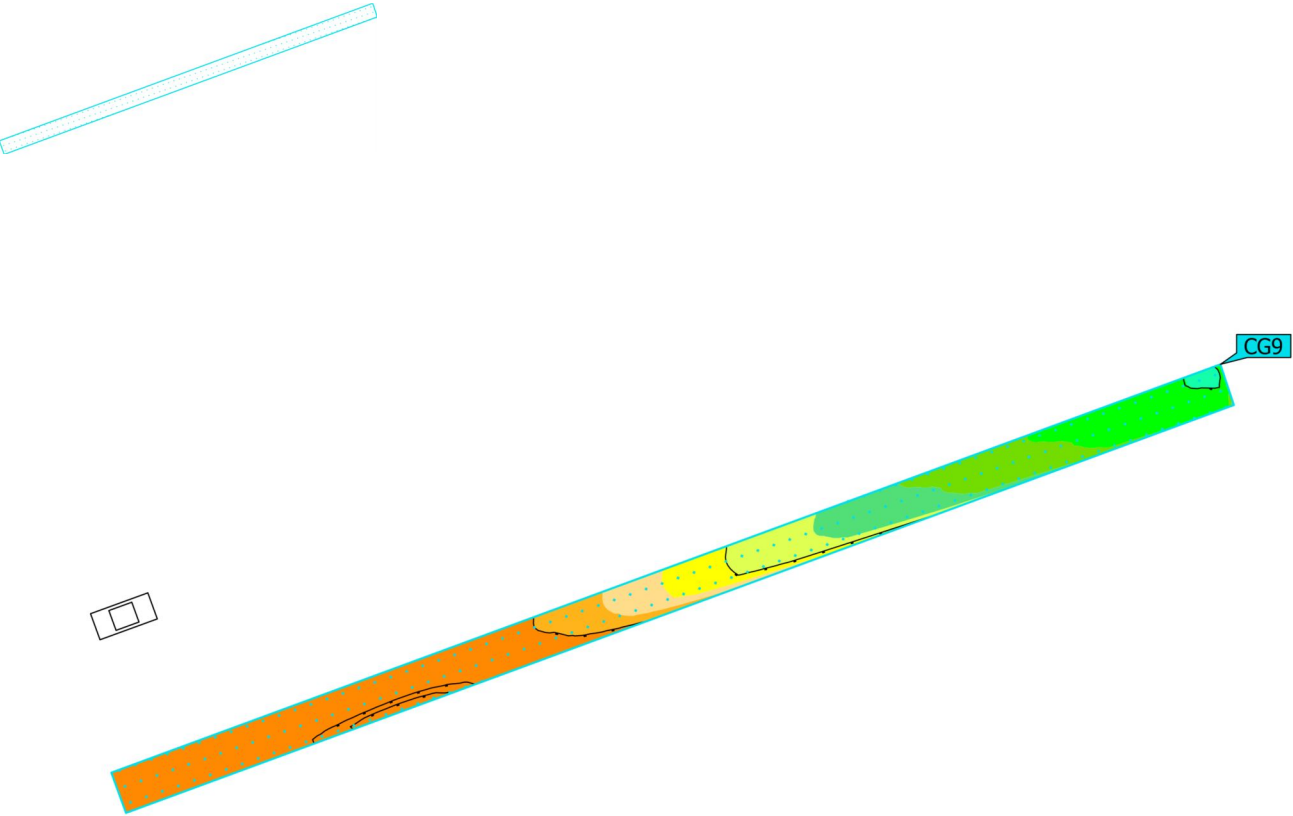


Properties	\bar{E}	E_{min}	E_{max}	g_1	g_2	Index
Ülekäigurada 2	37.0 lx	7.41 lx	157 lx	0.20	0.047	CG8
Vertical illuminance						
Rotation: 290.0°, Height: 1.000 m						

Utilisation profile: DIALux presetting, Standard (outdoor transportation area)

Site 1 (Light scene 1)

Ülekäigurada 2 kesktelg



Properties	\bar{E}	E_{min}	E_{max}	g_1	g_2	Index
Ülekäigurada 2 kesktelg Vertical illuminance Rotation: 110.0°, Height: 1.000 m	38.7 lx	9.63 lx	83.6 lx	0.25	0.12	CG9

Utilisation profile: DIALux presetting, Standard (outdoor transportation area)